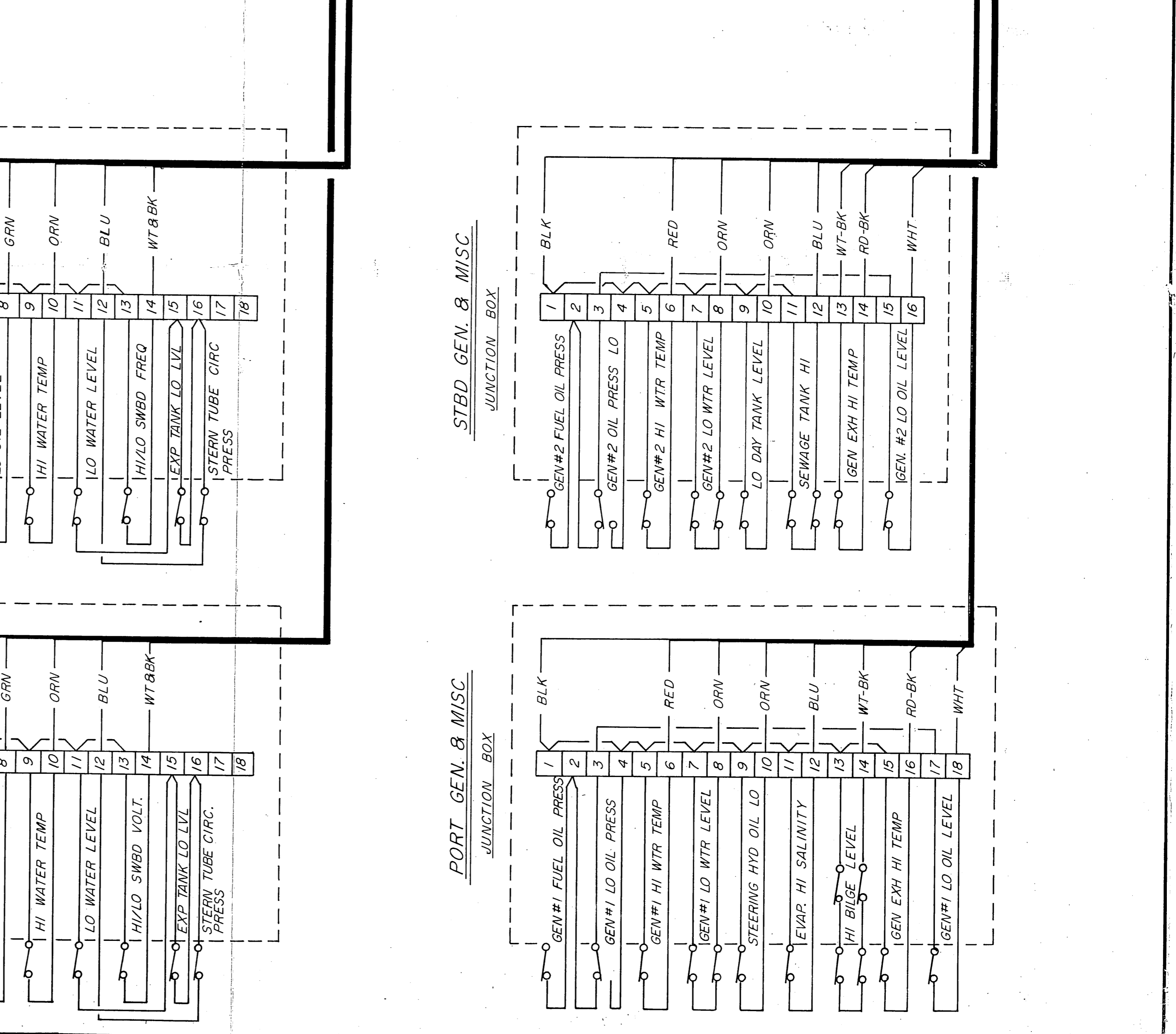
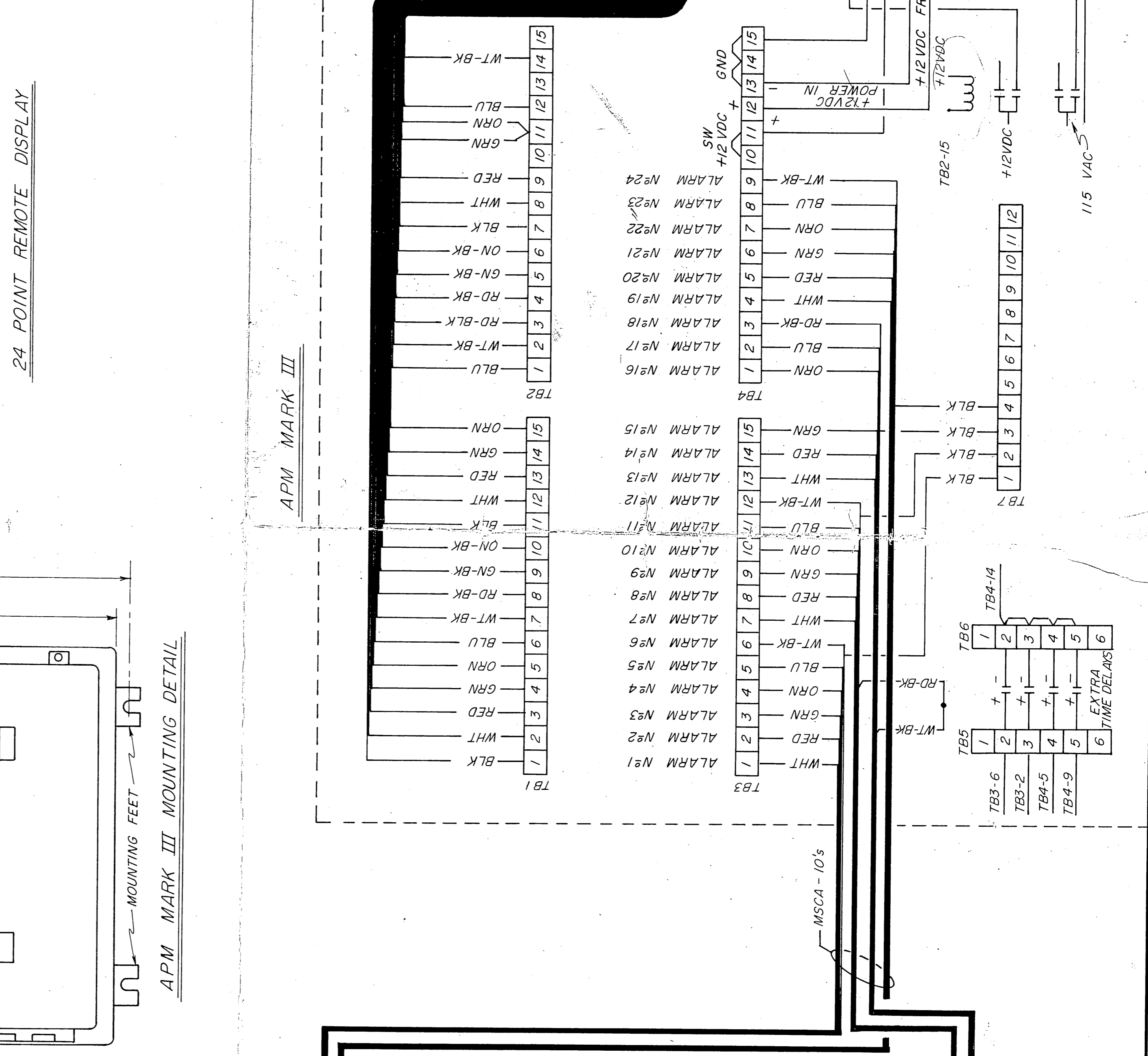
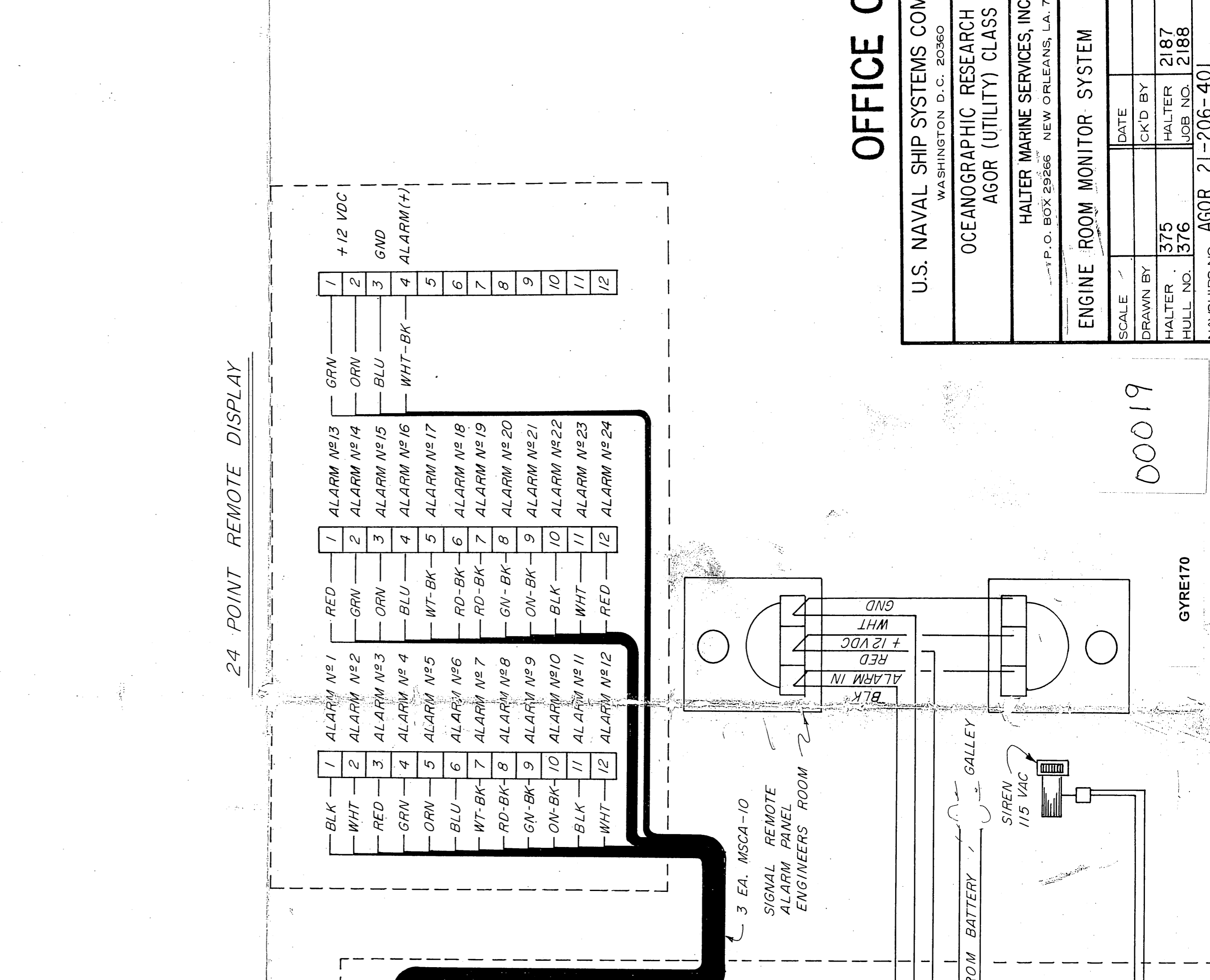
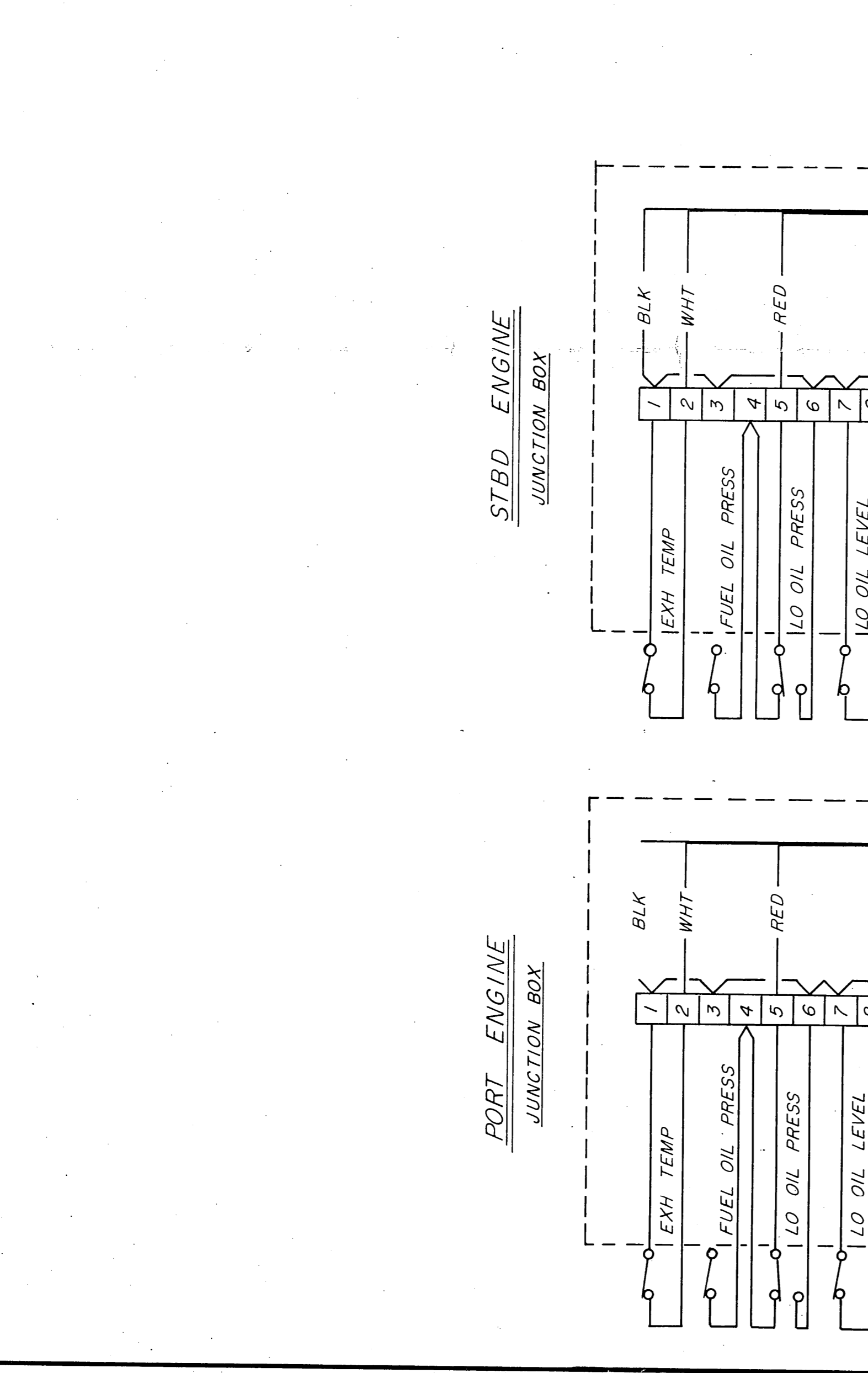
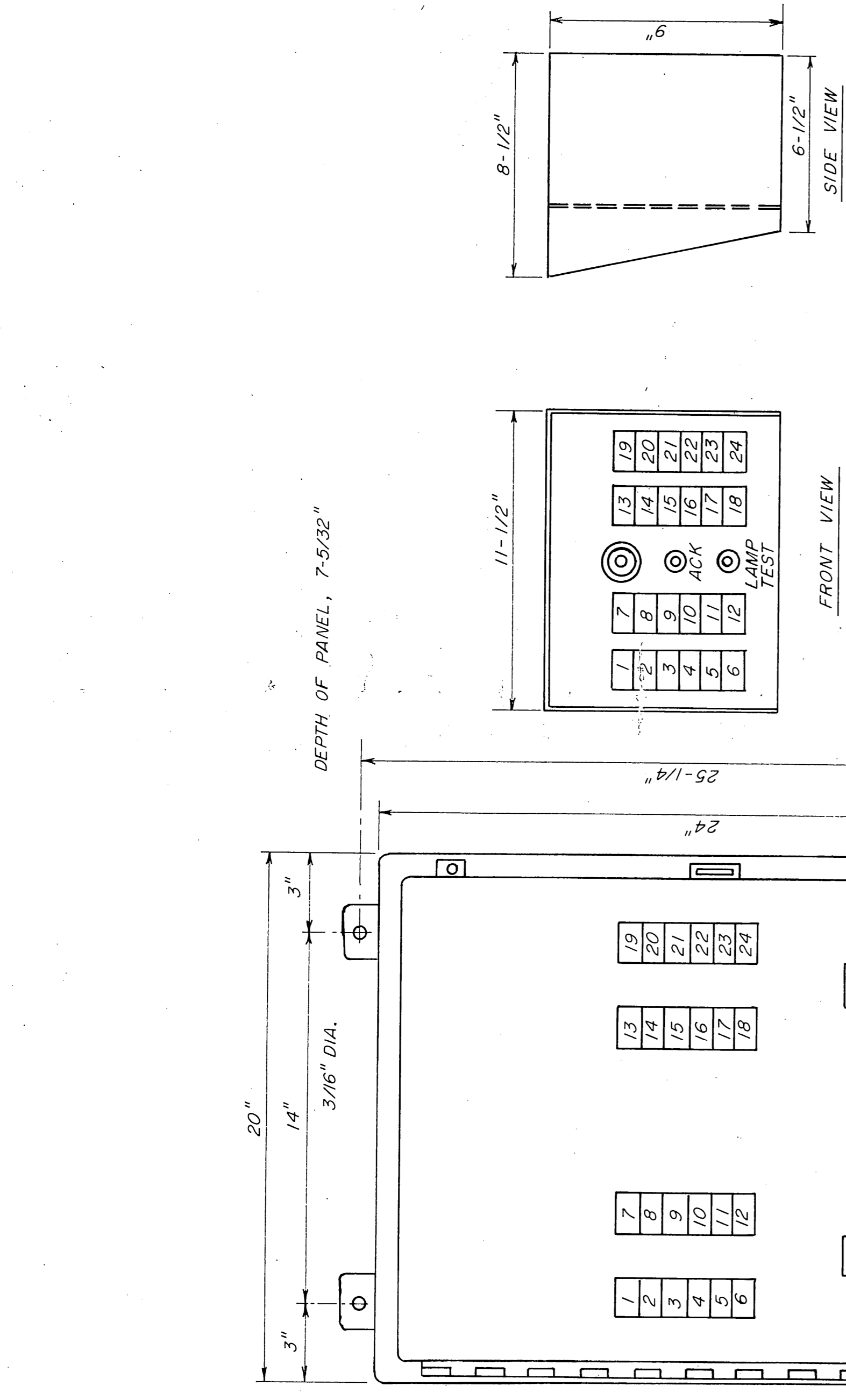


ALARM #	FUNCTION	PRESS. SET @	TEMP. SET @	LEVEL
				HI/LO
1	PORT ENGINE EXHAUST TEMP.		900°F	
2	PORT ENGINE LO OIL PRESS.	16 #		
3	PORT ENGINE LO OIL LEVEL			X
4	PORT ENGINE HI WATER TEMP.		175°F†	
5	PORT ENG. LOW WTR. LEVEL & STERN TUBE CIRC. PRESS.			X
6	HI/LO SWBD VOLTAGE			
7	GEN #1 LO OIL PRESS/LEVEL	25 # †		
8	GEN #1 HI WATER TEMP.		180°F †	
9	GEN #1 LO WATER LEVEL			X
10	STEERING HYD. OIL LO			X
11	EVAP. UNIT HI SALINITY			
12	HI BILGE LEVEL			X
13	GEN #2 LO OIL PRESS/LEVEL			
14	GEN #2 HI WATER TEMP.	25 # †	180°F †	
15	GEN 2 LO WATER LEVEL			X
16	LO DAY TANK LEVEL			X
17	SEWAGE TANK HI			X
18	GEN. EXH. HIGH TEMP.			
19	STBD ENGINE EXH TEMP.			
20	STBD ENGINE LO OIL PRESS.	16 #	900°F	
21	STBD ENGINE LO OIL LEVEL			X
22	STBD ENGINE HI WATER TEMP.		175°F †	
23	STBD ENG. LOW WATER LEVEL & STERN TUBE CIRC. PRESS.			X
24	HI/LO SWBD FREQ.			



OFFICE COPY

U.S. NAVAL SHIP SYSTEMS COMMAND
WASHINGTON D.C. 20386

OCEANOGRAPHIC RESEARCH SHIP
AGOR (UTILITY) CLASS

HALTER MARINE SERVICES, INC.
P.O. BOX 29266 NEW ORLEANS, LA. 70129

ENGINE ROOM MONITOR SYSTEM

SCALE _____ DATE _____
DRAWN BY HALTER 375
HULL NO. 376
JOB NO. 12188
NAVSHIPS NO. AGOR 21-206-401

00019

GYRE170